



Complete Solution for Material Handling

www.wontindia.in / www.wondia.com

WONT INDUSTRIAL EQUIPMENTS



Dear Sir,

If a question "What about Material Handling Equipments ?" were to be asked of all Industrial Units bearing a few large scale units like you, The others would probably reply--
"What about material handling equipments ?"

This attitude is observed even more so in small and medium sized units, it is even more surprising that some managers, engineers or other such people who are involved in M. H. Units engaged in the manufacture of Chemicals, Fertilizers, Plastic, Jute Mill, Cotton Mill, etc. have not even thought of proper materials handling.

The idea of material handling equipments just has not occurred to most of them. If enlightened about M. H. Equipments they would probably say "we do not handle enough in a day" or "what is wrong with manual handling"? or more emphatic like "equipments will be too expensive" or "I/we save a lot with manual handling."

But in the growth of modern industries M.H. Plays a vital role. It is seen that countries utilizing modern methods and equipments in handling various forms of materials at site, speed up completio of any project in now customary in some of the mass production industries that form the stage of feeding of raw material to the stage of placement of finished goods on the shelves of stores no process requires human touch. "We do not mean to throw away man power but in turn use manpower for producing goods of unique style and cultural values."

We have developed a complete range of M.H. equipments for you need which may seriously be thought of for better and fast production in your esteemed organization.

So, please do not hesitate to write to us or call upon us for the detils and the products when in need. We would love and appreciate your enquiry as and when it comes.



725

2 Wheeled Barrow
(6 cft.)



726

2 Wheeled Barrow
(4 cft.)



728

2 Wheeled (Heavy Duty)
Barrow (6 cft.)



730

2 Wheeled Barrow
(6 cft.)



731

Single Wheeled Barrow
(3 cft.)



732

2 Wheeled Barrow
(6 cft.)



734

Heavy Duty Single
Wheeled Barrow (3 cft.)



735

2 Wheeled barrow
(5 cft.)



736

2 Wheeled Barrow Scooter Type
(6 cft/ 9 cft.)



736A

3 Wheeled Barrow
(3.5 cft & 5 cft.)



737

Sack Barrow (Angle Frame)
Cap. 250 kg.



740

3 Wheeled Double Gas
Cylinder Trolley



740A

Double Wheeled Double Gas
Cylinder Trolley



740B

4 Wheeled Double Gas
Cylinder Trolley



740C

Single Gas
Cylinder Trolley



741

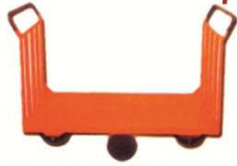
All Steel net Covered Box Trolley for
Finished Products / Tools

WONT INDUSTRIAL EQUIPMENTS



741A

Basket Trolley with Plastic Container



742

4 Wheeled Slopping Platform Trolley



747

Sack barrow (pipe Frame)
Cap. 250 Kg.



748

2 Wheeled Drum Trolley



749

3 Wheeled Drum Trolley



750

Plastic / M.S. / S. Steel Pallet



752

Manual Drum Lifter / Shifter cum tilter



753

Cloth Batching Trolley (Channel/ Pipe Frame)



754

Platform Trolley
(Capacity upto 6 Tons)



754A

Heavy Duty Platform Trolley
(Capacity upto 6 Tons)



756

Single Upright Push Platform Trolley (1 Ton)



756A

4 Wheeled Platform Trolley
(Capacity upto 6 Tons)



756B

3 Wheeled Platform Trolley



756C

Platform Trolley with 4 Wheeled both side Tubular Handle



756D

Platform Trolley with Rollers



757

Platform Trolley with Folding Handle



761

3 Wheeled Box Trolley
(Capacity upto 1 Ton)



764

Jeep Trailer (Tailor Made)



769

2 Wheeled Manual Drawn Hand Cart (Capacity upto 15 cft)



774

4 Wheeled Hydraulic / Mechanical Tractor toeing Trailer
(Capacity upto 10 Tons)



777 PE-25

Detail on Page No. 9

Hydraulic Pallet Truck
(Capacity 2 / 2.5 / 3 and 5 Tons)



778 PE-25

Detail on Page No. 9

S. Steel (304 / 316) Hydraulic Pallet Truck (Capacity 2 / 2.5 Tons)



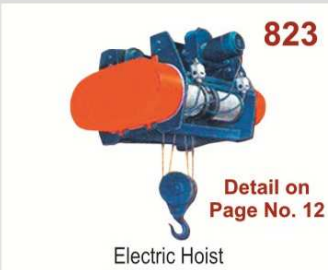
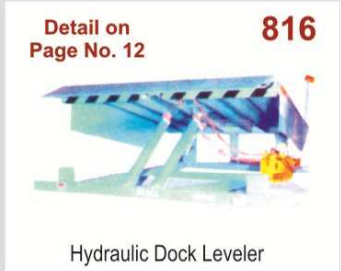
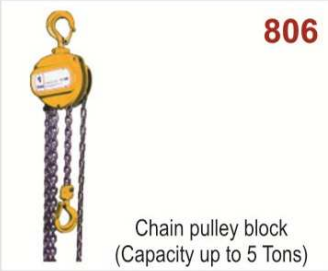
783

4 Wheeled Box Trolley with Side Drop Arrangement
(Capacity upto 3 Tons)



785

4 Wheeled Turn Style Box Trolley with 2 Side Drop Arrangement
(1/2-3 Tons)



786



Bobbin Trolley

787



Doffing Trolley

814



Hydraulic Beam Shifting Trolley

815



Doffing Trolley

830



Hydraulic Beam Trolley
With Reed Frame

831



Empty Beam Trolley

832



Godet Lifter

833



Batch Puller

834



Waste Collection Tank

835



Pack Assembly Table

836



Pack Handling Trolley

837



Conveyer

838



Spinnerate Cleaning Tray

839



Hot Water Tank

840



Pack Handling Table

841



AGITATOR

WONT INDUSTRIAL EQUIPMENTS

 <p>RD SERIES</p>	 <p>LIGHT DUTY PRESS STEEL CASTOR</p>	 <p>CARD CANE</p>	 <p>RG WITH ROD</p>
 <p>DX SERIES</p>	 <p>DXM SERIES</p>	 <p>DX TWIN WHEEL SERIES</p>	 <p>PRESS STEEL CASTOR HEAVY DUTY HOLLOW TYPE</p>
 <p>RG SERIES</p>	 <p>RG WITH BRAKE</p>	 <p>MS FABRICATED</p>	 <p>HIT FORGED CASTOR</p>
 <p>HEAVY DUTY FORGED CASTOR WITH THRUST BEARING</p>	 <p>HSC2 SERIES</p>	 <p>HSC2/TW SERIES</p>	 <p>M.S. FABRICATED HEAVY DUTY CASTOR</p>
 <p>V TRACK</p>	 <p>SQUARE TRACK</p>	 <p>FLANGE TRACK</p>	<p><i>All type of castors such as press steel, forging, M.S. Fabricated, Stainless Steel etc. Available with All type of wheels like : P.U.CI / Rubber Bonded / Cast Iron / Cushion tyre / Nylon / PP / UHMW / Polymer etc.</i></p> <p><i>Castors are available up to load capacity of 4 Metric Tonnes per each Unit. Range of various types of Castors has been covered for Hospitals, Textile, Spinning Units, Chemical Industries, Fertilizer Industries, Sugar Industries etc.</i></p> <p><i>You can ask for Castors with double lock also i.e. wheel lock as well as swivel lock.</i></p>

WONT INDUSTRIAL EQUIPMENTS



UHMW WHEEL 2"-12"



NYLON
PPCP WHEEL 2"-12"



RED
POLYMER WHEEL 4"-12"



BLACK
POLYMER WHEEL 6"-12"



RB WHEEL 3"-16"



CT WHEEL 4"-16"



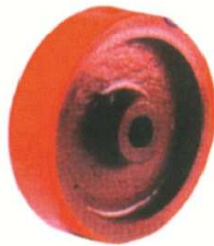
FIBRE WHEEL 1 1/2 TO 12"



FIBRE CI BONDED 3"-12"



PU NYLON WHEEL



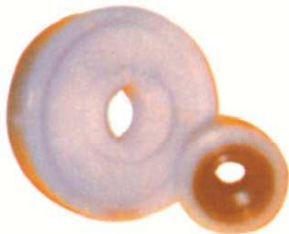
PU CI BONDED WHEEL



ROLLERS (38 TO 63 CM)



TRANSFER UNITS 1/2" TO 1 1/2"



UHMW
STEERING & LOAD WHEEL



PU
STEERING & LOAD WHEEL



P.U.CI TAILOR MADE DRIVE
AND SUPPORT WHEEL



CI (VG) WHEEL



CI (SQG) WHEEL



CI (FLG) WHEEL

Wheel are available up to load capacity 5 metric Tonnes each wheel. Many other varieties of wheels are also available as per your requirement such as solid Compressed Rubber Wheels, Nylon Bonded to Cast Iron, Phenorex Bonded to Cast Iron, Polyurethane Bonded on Nylon, Cast Iron, P.U.CI / Rubber Bonded / Nylon / PP / UHMW / Polymer etc.

WONT INDUSTRIAL EQUIPMENTS

Aluminium Single Ladder

Design No. 10 SSL.

SPECIFICATIONS SIDES

Channel Section
2 5/8" X 1 1/4" Approx

RUNGS

1" Dia Non-slip Corrugated
Tubing At 10" Centre

HEIGHT AVAILABLE

5' (1.52) TO 30' (9.11)



Aluminium Single Ladder (With Flat Steps)

Design No. 12 SSL.

SPECIFICATIONS SIDES

Channel Section of size
2 5/8" X 1 1/4" Approx

RUNGS

2.5/8" X 1.1/4"
12" Centre to Centre

HEIGHT AVAILABLE

5' (1.52) TO 30' (9.11)



Aluminium Folding Baby Ladder (With Flat Steps)

Design No. 154 SFBL.

SPECIFICATIONS SIDES

Channel Section of size
3.07" X 1.18"

RUNGS

1.38" X 1.18"
Rectangular Tube

HEIGHT AVAILABLE

3' (0.09) TO 8' (2.43)



Aluminium Wall Extension Ladder

Made from High Tensile
Aluminium Alloys

Design No. 21 SM.

SPECIFICATIONS SIDES

Channel Section
2 5/8" X 1 1/4" Approx

RUNGS

1" Dia Non-slip Corrugated
Tubing At 10" Centre

HEIGHT AVAILABLE

8' (2.43) TO 55' (16.76)



Aluminium Folding Factory Ladder (Heavy Duty)

Made from High Tensile
Aluminium Alloys

Design No. 152 SFFL.

SPECIFICATIONS SIDES

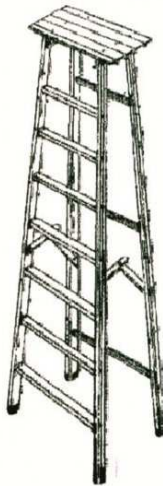
Channel Section
2 5/8" X 1 1/4" Approx

RUNGS

2.5/8" X 1.1/4"
12" Centre to Centre

HEIGHT AVAILABLE

4' (1.22) TO 20' (6.08)



Aluminium Self Supporting Platform Ladder

Made from High Tensile
Aluminium Alloys

Design No. 23 SSPL.

SPECIFICATIONS SIDES

Channel Section
2 5/8" X 1 1/4" Approx

RUNGS

1" Dia Non-slip Corrugated
Tubing At 10" Centre

HEIGHT AVAILABLE

6' (1.82) TO 20' (6.08)



Aluminium Trolley Step Ladder

Made from High Tensile
Aluminium Alloys

Design No. 108 STSL.

SPECIFICATIONS SIDES

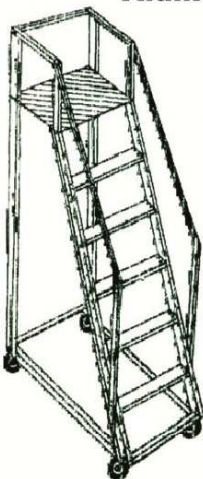
2.5/8" X 1.1/4" Approx

RUNGS

2.5/8" X 1.1/4" Approx

HEIGHT AVAILABLE

6' (1.82) TO 18' (5.47)



Scaffolding
FRP Tower



Light Weight
Aluminium
Scaffolding Tower



FRP Ladder Heights
Available 3ft. to 20 ft.

WONT INDUSTRIAL EQUIPMENTS

Aluminium Telescopic Tower Ladder

Made from High Tensile Aluminium Alloys

Design No. 102 STWL.

SPECIFICATIONS SIDES

"C"
2.5/8" X 1.1/4"

RUNGS

1" Dia Non-slip Corrugated Tubing At 10" Centre to Centre

HEIGHT AVAILABLE

8' (2.43) TO 55' (16.76)



Aluminium Self Supporting Extension Ladder

Made from High Tensile Aluminium Alloys

Design No. 20 SSSE.

SPECIFICATIONS SIDES

Channel Section
2.5/3" X 1.1/4" Approx

RUNGS

1" Dia Non-slip Corrugated Tubing At 10" Centre

HEIGHT AVAILABLE

10' (3.04) TO 40' (12.15)



Aluminium Telescopic Tower Ladder

Made from High Tensile Aluminium Alloys

Design No. 103 STWL.

SPECIFICATIONS SIDES

"C" Section
2.5/8 X 1.1/4"

RUNGS

1" Dia Non-slip Corrugated Tubing At 10" Centre to Centre

HEIGHT AVAILABLE

8' (2.43) TO 54' (16.40)



Aluminium Tower ladder (Square Type)

Made from High Tensile Aluminium Alloys

Design No. 101

SPECIFICATIONS SIDES

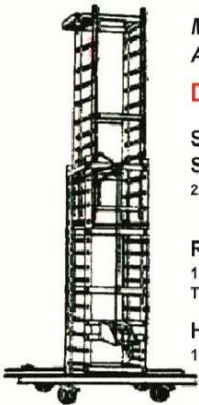
2.5/8" X 1.1/4"

RUNGS

1" Dia Non-slip Corrugated Tubing At 10" Centre to Centre

HEIGHT AVAILABLE

10' (3.04) TO 50' (15.19)



Aluminium Tilting Tower Ladder Square Type

Made from High Tensile Aluminium Alloys

Design No. 106 STTL

SPECIFICATIONS SIDES

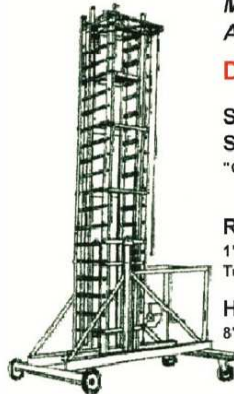
"C" Section 2.5/8" X 1 1/4"

RUNGS

1" Dia Non-slip Corrugated Tubing At 10" Centre to Centre

HEIGHT AVAILABLE

8' (2.43) TO 54' (16.40)



Aluminium Jeep Tower Ladder

Made from High Tensile Aluminium Alloys

Design No. 107 SJTL

SPECIFICATIONS SIDES

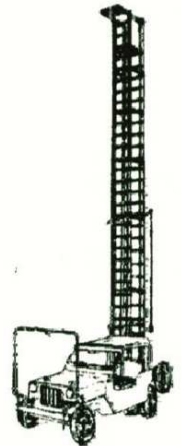
"C" Section 2.5/8" X 1 1/4"

RUNGS

1" Dia Non-slip Corrugated Tubing At 12" Centre to Centre

HEIGHT AVAILABLE

8' (2.43) TO 54' (16.40)



Aluminium Tower Ladder

Design No. 105 STWL

SPECIFICATIONS SIDES

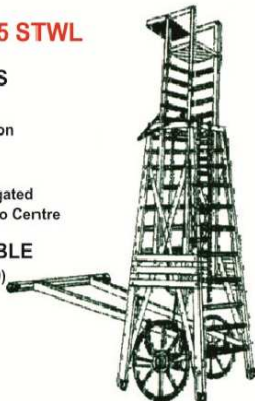
2 5/8" X 1 1/4" C Section

RUNGS

1" Dia Non-slip Corrugated Tubing At 12" Centre to Centre

HEIGHT AVAILABLE

10' (3.04) TO 50' (15.19)



CLOSE HEIGHT & EXTENDABLE HEIGHT CHART

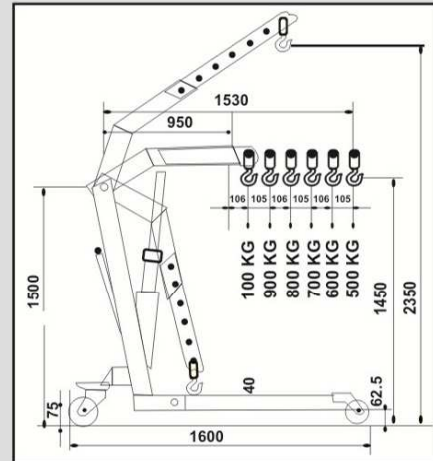
WHEN CLOSED	WHEN EXTENDED	WHEN CLOSED	WHEN EXTENDED
FT. (Mtrs.)	FT. (Mtrs.)	FT. (Mtrs.)	FT. (Mtrs.)
8' (2.43)	12'/14' (3.65/4.25)	24' (7.29)	40' (12.19)
10' (3.04)	18' (5.47)	26' (7.92)	44' (13.41)
12' (3.65)	20' (6.08)	28' (8.51)	50' (15.19)
14' (4.25)	24'/25' (7.29/7.59)		
16' (4.86)	28' (8.51)		
18' (5.47)	32' (10.63)		
20' (6.08)	50' (15.19)		
20' (6.08)			

Note : Tailor made sizes are available as per your Specific Requirement

WONT INDUSTRIAL EQUIPMENTS

Detail for Model No. 792/792A and 792B

HYDRAULIC HAND FLOOR CRANE



Features

- Widely used in Auto garages, Machine assembly shops and maintenance work.
- Largely used in injection moulding shops for loading and unloading of heavy moulds.
- Used in almost all industries for loading and unloading of material from truck.
- Widely used in industries for handling coils, electric motors, rolls etc.

Detail for Model No. 817

HYDRAULIC LOADING PLATFORM



BENEFITS :

There are a lot of benefits which can be apparently seen as compared to the conventional wire rope or traction lift.

1. **MAJOR POWER SAVING** as compared to the wire rope lift hydraulic has a clear upper hand in terms of power savings. Traction lift will consume power in both the directions of travel i.e. in the UP direction as well as in the DOWN direction, where as in the hydraulic Platform the power consumption is in the up direction only.
2. **SAVING OF CARPET AREA** as compared to the wire rope hydraulic Platform does not require a lift shaft in can be easily fitted outside the building. This results in a lot of saving of the constructed area on each floor of the building. Moreover if there is not a provision for erection of the lift-then hydraulic Platform can be easily fitted there is no need to do costly construction for the erection.
3. **NO OVER HEAD ROOM** is required in the erection of hydraulic Platform, where as for wire rope lift you not only require an over head RCC machine room but along with it you require of RCC lift shaft also.
4. **SINGLE SIDE OPENING** is only possible in wire lift, where as in the hydraulic lift you can have single, **two or even three sides** opening also.
5. **100% SAFETY** is there in hydraulic lift. There are flow control valves which control the speed of the hydraulic lift even if there is an accident and the supply line is ruptured still the lift will come down at the specified speed, where as in the wire rope lift there are a lot of chances of accidents.

SILENT FEATURES OF HYUDRAULIC PLATFORM

• Very less failure chances • Very Less chances of Accidents • consumes very less Power • Standard Fitments • Maintainance is Negligible in the system • Does not Required Machine Room • No Greasing point • the system has a lot of in built safety devices such as pressure release valve which does not allow the motor to be over loaded, there are saver on packing set to give a long life to the seal, there is a Electronic control panel for easy accessibility

long life • We had converted the A.C. Power from Power pack to control panel in D. C. Power due to keeping saety factor in our mind all the circuits near to platform are of D. C. Power • Control Panel will be with Digital Display that Display all the functions currently used by loading system. • We also provide manual operating system for emergency, The lift work by pass the Auto System • All the Function in this loading Platform are just as in House Lift.

WONT INDUSTRIAL EQUIPMENTS

Detail for Model No. 816

DOCK LEVELER



DOCK LEVELER is an adjustable ramp used between the transport vehicle and despatch area of the warehouse or factory for efficient material transfer applications. It fulfills the following two functions: bridges the gap between the despatch area and the transport vehicle and compensates for variations in the truck bed height. When the DOCK LEVELER is in operation, it is fixed to the building and rests on the bed of the truck. Depending on the type, the DOCK LEVELER is placed on its position manually or power operated. Two thick fabric core moulded bumpers, along with DOCK LEVELER placed as part of the building, acts as a safety cushion for the building and the truck. The rugged design and relatively simple construction of the DOCK LEVELER leaves few maintenance requirements.

DOCK LEVELER are one of the simplest devices ideally suitable for Indian conditions because of their ease in operation and ruggedness for not only helping the loading and unloading of trucks easily but also reducing the turnaround time of trucks very substantially.

Park truck at loading bay. Lift up the deck. Lower lip smoothly on to the truck bed. Transfer goods. Drive Truck away. The material transfer is accomplished safely and smoothly in a matter of minutes.

Detail for Model No. 823 AND 818

E.O.T. CRANE AND ELECTRIC HOIST



TECHNICAL SPECIFICATION

Capacity		0.5T	1T	1.5T	2T	3T	5T	7.5T	10T
STD. Lift (M)		6	6	6	6	6	6	6	6
Hoisting	Speed MPM	3.5/4	3.5/4	3.5/4	3.5/4	3.5	3.5	3.5	3
	Motor MPM	0.75	1.5	2	3	5	6	7.5	10
Cross Travel	Speed MPM	15/17	17/20	17/20	15/17	15	15	15	15
	Motor Hp	0.25	0.25	0.25	0.50	0.50	0.75	0.75	1
No. of Fall		2	2	2	2	2	4	4	4
Head Room (HD)		635	635	635	720	920	920	1350	1600
Total Length (L)		680	680	680	845	1015	1015	1090	1220
Total Width (W)		570	570	570	620	870	870	870	1100
Total Height (H)		780	790	800	875	1170	1170	1600	1850
A		440	440	440	560	675	675	700	770
B		100	100	100	145	190	190	220	250
C		140	140	140	140	150	150	170	200
D		440	440	440	525	700	700	700	850
E		425	425	425	420	420	455	455	500
F		200	200	200	230	260	260	260	300
Weight (KGS.)		185	190	200	280	365	560	700	1060

WONT INDUSTRIAL EQUIPMENTS

Detail for Model No. 821

High Pressure Jetting / Cleaning Equipments



Accessories

- ◆ Base plate
- ◆ Belt and Pulleys
- ◆ Trolley
- ◆ Regulation Valve
- ◆ Safety Valve
- ◆ Trigger Gun
- ◆ Unloading Valve
- ◆ Nozzles
- ◆ Hoses
- ◆ Pressure Gauge

Silent Features

- ◆ Crank Case : Sturdy Cast Iron
- ◆ Liquid Head : Stainless Steel
- ◆ Plungers : Ceramic Coated
- ◆ Plunger Seal : Rubber V. Seal
- ◆ Cann. Rod : Special Zinc Alloy
- ◆ Crank Shaft : Alloy Steel
- ◆ Bearing : Roller type

Application

- ◆ Reverse Osmosis
- ◆ Hydro Testing
- ◆ Car Washing
- ◆ Boiler Feed
- ◆ Descaling
- ◆ Chemical Injection
- ◆ Jet Cleaning

Capacity

Capacity : **Up to 100 l/m**

Pressure : **Up to 250 Kg/cm²**

Temp : **Up to 100 °C**

Detail for Model No. 822

Motorised Hydraulic Testing Unit



Pressure

Up to 300 Kg./cm²

Accessories

- ◆ Base Plate
- ◆ Belt and Pulleys
- ◆ Trolley
- ◆ Relief Valve
- ◆ Check Valve
- ◆ Suction Tank
- ◆ Suction Strainer
- ◆ Discharge Hose
- ◆ Flanges

Silent Features

- ◆ Totally Enclosed
- ◆ Oil Bath Lubrication
- ◆ Easy to Maintain
- ◆ Rugged Standard Design

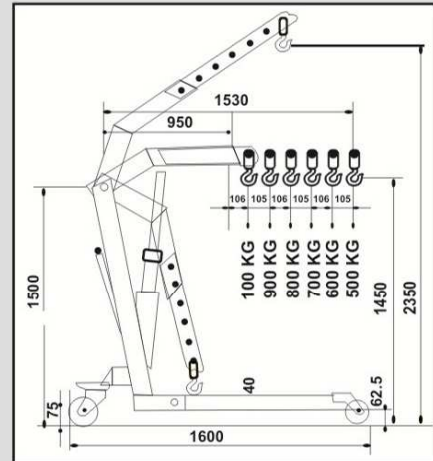
Application

- ◆ Pressure Vessels
- ◆ Boiler Feed
- ◆ High Altitude Pumping
- ◆ Hydrostatic Pressure
- ◆ Testing of Casting, Tubes & Valves

WONT INDUSTRIAL EQUIPMENTS

Detail for Model No. 792/792A and 792B

HYDRAULIC HAND FLOOR CRANE



Features

- Widely used in Auto garages, Machine assembly shops and maintenance work.
- Largely used in injection moulding shops for loading and unloading of heavy moulds.
- Used in almost all industries for loading and unloading of material from truck.
- Widely used in industries for handling coils, electric motors, rolls etc.

Detail for Model No. 817

HYDRAULIC LOADING PLATFORM



BENEFITS :

There are a lot of benefits which can be apparently seen as compared to the conventional wire rope or traction lift.

1. **MAJOR POWER SAVING** as compared to the wire rope lift hydraulic has a clear upper hand in terms of power savings. Traction lift will consume power in both the directions of travel i.e. in the UP direction as well as in the DOWN direction, where as in the hydraulic Platform the power consumption is in the up direction only.
2. **SAVING OF CARPET AREA** as compared to the wire rope hydraulic Platform does not require a lift shaft in can be easily fitted outside the building. This results in a lot of saving of the constructed area on each floor of the building. Moreover if there is not a provision for erection of the lift-then hydraulic Platform can be easily fitted there is no need to do costly construction for the erection.
3. **NO OVER HEAD ROOM** is required in the erection of hydraulic Platform, where as for wire rope lift you not only require an over head RCC machine room but along with it you require of RCC lift shaft also.
4. **SINGLE SIDE OPENING** is only possible in wire lift, where as in the hydraulic lift you can have single, **two or even three sides** opening also.
5. **100% SAFETY** is there in hydraulic lift. There are flow control valves which control the speed of the hydraulic lift even if there is an accident and the supply line is ruptured still the lift will come down at the specified speed, where as in the wire rope lift there are a lot of chances of accidents.

SILENT FEATURES OF HYUDRAULIC PLATFORM

• Very less failure chances • Very Less chances of Accidents • consumes very less Power • Standard Fitments • Maintainance is Negligible in the system • Does not Required Machine Room • No Greasing point • the system has a lot of in built safety devices such as pressure release valve which does not allow the motor to be over loaded, there are saver on packing set to give a long life to the seal, there is a Electronic control panel for easy accessibility

long life • We had converted the A.C. Power from Power pack to control panel in D. C. Power due to keeping saety factor in our mind all the circuits near to platform are of D. C. Power • Control Panel will be with Digital Display that Display all the functions currently used by loading system. • We also provide manual operating system for emergency, The lift work by pass the Auto System • All the Function in this loading Platform are just as in House Lift.



WONT INDUSTRIAL EQUIPMENTS

Plot No. 224, Road No. 2, G.I.D.C. Sachin, Surat - Gujarat (INDIA) Telefax +91-261-2399351, 2397351 Mobile : +91 992442 7100

www.wontindia.com, www.wontindia.in

Authorised Dealers